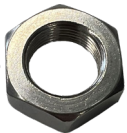


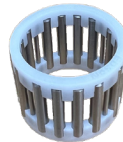
1. [Brake Knob and Shaft](#)  
P/N: 960-G-230-A-BSL7-5/8



7. [O-RING](#)  
P/N: 960-A-1933



2. [Wheel Nut for Straight Shaft](#)  
P/N: F1-FJN



8. [Needle Bearing 1-1/8"](#)  
P/N: 960-A-140-1.1



3. [1/4" Woodruff Key](#)  
P/N: 684-250W



9. [Nylon Washer](#)  
P/N: 960-A-137



4. [1" Washer](#)  
P/N: 960-A-729



10. [11 Tooth Sprocket](#)  
P/N: 855-2-11-TSB

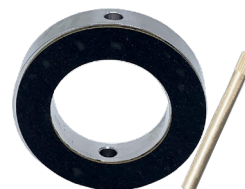


5. [Heavy Duty Snap Ring](#)  
P/N: 960-A-1870

11. [Brake Shoe](#)  
P/N: 960-A-1793



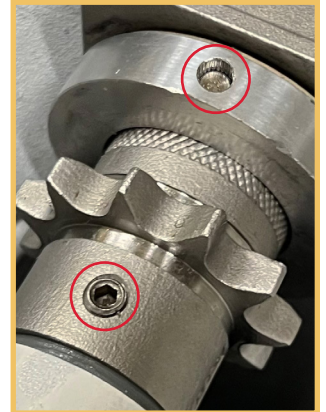
6. [Snap Ring](#)  
P/N: 960-A-660



12. [Cross-Pin](#)  
P/N: 960-A-2069

[Rebuild Kit \(314-335\)](#) and [Additional Needle Bearing & Brake Kit \(316-336-402-TSB\)](#)

1. Remove brake knob and shaft assembly, steering wheel, compass and engine controls. This will provide better access to the shaft assembly.
2. Loosen the steering cables and chain by backing off the take-up eyes at the quadrant or radial drive, lift the chain off the sprocket and tie to the forward part of the bowl. Be sure to maintain the chain orientation for reinstallation. Note: Some installations require the steering cables to be crossed for proper steering direction.
3. Stuff a rag just under the sprocket into the pedestal tube to prevent loose parts from falling in the pedestal tube.
4. Using a drift or punch, drive out the pin from the brake collar. Drive out from the pin end which is recessed into the brake collar. Drive pin half-way out, rotate the shaft so that the pin is up, pull pin from the brake collar using vice-grip pliers.
5. Remove the two allen head set screws that hold the sprocket to the shaft.
6. Align the notch in edge of the aft nylon washers with the mark stamped on the sprocket. On a brass sprocket you will find a “V” stamped on the aft end of the sprocket hub. On stainless sprockets you will find an “Edson” logo with arrow. Aligning the mark on the sprocket with the notch in the washers aligns the key in the shaft with the keyway in the nylon washer to allow the shaft to be removed.
7. With a piece of wood against the wheel nut, gently tap the wheel shaft aft from the housing. Be careful not to drop the shaft components into the pedestal.
8. Remove the sprocket, two nylon washers and forward needle bearing.
9. Remove aft needle bearing and washers.
10. Wipe out any dirt or old grease before reassembly.



**To reassemble:** Reverse the above procedure. Lubricate the bearings by inserting the nozzle of a tube of teflon grease into the hole in the casting above the bearings and squeezing the tube as you rotate the shaft. Don't forget to remove the rag and re-tension the steering cables.