

# Steering Data Sheet

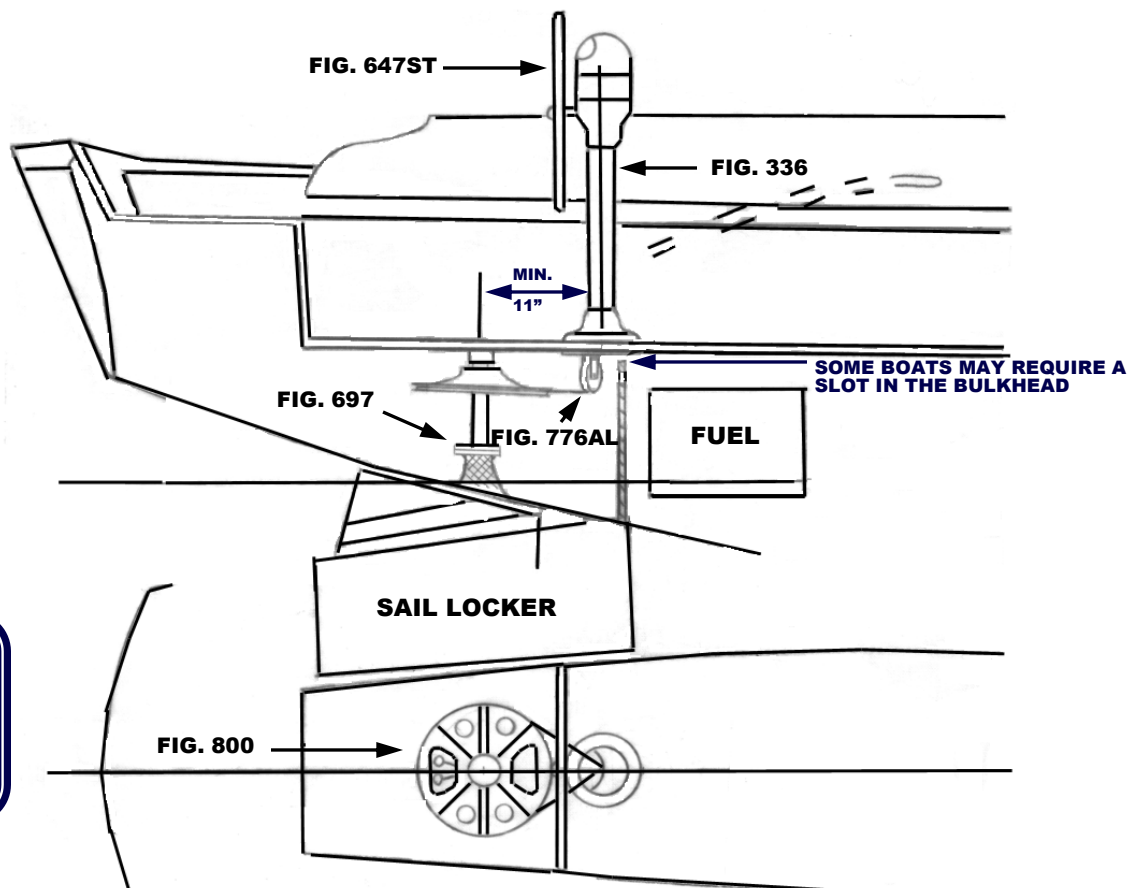


S-243-4

## CAL 34 & 2-34

THIS SCHEMATIC IS INTENDED TO PROVIDE AN OUTLINE FOR DESIGNING YOUR SYSTEM. COMPLETE INSTRUCTIONS FOR INSTALLATION CAN BE FOUND IN OUR "PLANNING & INSTALLATION GUIDE", WHICH CAN BE FOUND ON OUR WEBSITE.

VISIT US ONLINE AT  
[WWW.EDSONMARINE.COM](http://WWW.EDSONMARINE.COM)



**NOTE:**

WIRES MUST BE  
CROSSED WITHIN  
PEDESTAL FOR  
PROPER STEERING  
DIRECTION

**STEERING COMPONENTS:**

1 FIG. 336-5-211T

1 FIG. 647ST-24-5

1 FIG. 77103

1 FIG. 776AL-4AL

1 FIG. 800-8

4 FIG. 646-4HEX

(A FIG. 697 STUFFING BOX/BEARING MAY BE REQUIRED)

**CLASSIC PEDESTAL STEERER/TAPERED**

**DISHED DESTROYER WHEEL**

**CHAIN & WIRE ROPE KIT W/HARDWARE [WAS 774-2S15B9]**

**(1.5FT #50 CHAIN, 9FT 3/16" 7X19 305 SS WIRE ROPE)**

**ADJUSTABLE CROSSED WIRE IDLER**

**RADIAL DRIVE WHEEL**

**PEDESTAL MOUNTING BOLTS**

