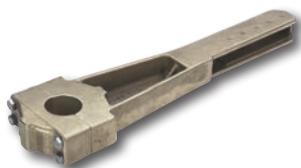


EDSON®

POWERBOAT PRODUCTS



Pro-Series **PowerKnob™**



Edson's PowerKnobs strap or bolt onto the rim of virtually any make of steering wheel. With the feel of precision engineering, twin races of fast action Delrin® ball bearings and a comfortable ergonomic shape, it is possible to effortlessly maneuver any boat, from a flats boat, center console or runabout to a sportfish, motoryacht or trawler with the Edson PowerKnob.



Loaded with Benefits:

- Helps you back down with precision and confidence.
- Comfortable ergonomic shape.
- Gives your helm the look and feel the pro's love.
- Makes big turns Quick and Effortless.
- No more hand-over-hand steering!
- All tools needed for installation are included.
- Ideal for hydraulic and cable steering systems.

Filled with Features:

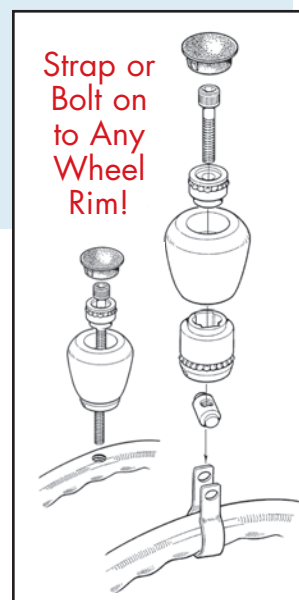
- Stainless Knob is hand polished to a mirror finish.
- Teak Knob built of same high quality stainless components.
- Fits all wheel rims from 5/8" to 1 1/8" diameter.
- Twin races of super smooth Delrin® ball bearings.
- 25 Year Warranty.*
- Knob can be strapped or bolted on to wheel rim**.

Available In:

- ComfortGrip™ Stainless
- Polished Stainless
- Black Composite - Sportsman™ Series

* On Pro-Series models only. Warranty excludes straps, colors and finishes.

** Bolt-on version for solid wheel rims only.



"Out in the flats it always seems I need three hands. The Edson PowerKnob lets me easily steer one-handed, leaving a hand free for the throttle, a rod, net, or to reach for my pliers. This wheel looks like a piece of jewelry, but it's built like a tank."

Capt. Lindsay Harper, Flats Guide
Key West, FL

ComfortGrip™ PowerKnob

We've taken all the features of our proven Stainless PowerKnob and added rubber finger grips for even greater comfort and control! Soft rubber insert will stand up to the harshest environments without cracking or discoloring. A great addition to any wheel, it particularly compliments our ComfortGrip Steering Wheel.

Stainless ComfortGrip#969ST-18CG



ProSeries™ PowerKnob

Edson's classic Stainless Powerknob is hands-down the best available on the market today. Available in three different finishes to compliment any boat, this is one accessory you won't know how you lived without.

Stainless ProSeries.....#969ST-18



Sportsman Series™ PowerKnob

As a follow-up to its extremely popular Stainless Pro-Series PowerKnob line, Edson's rugged and economical Sportsman Series™ PowerKnob features the same ball-bearing design and ergonomic shape as the ProSeries. The Sportsman Series Knob is built of black polymer and marine-grade stainless with precision milled bearing races.

Composite Sportsman Series#967-18BL



EVERYTHING YOU NEED IS INCLUDED!

- PowerKnob
- Two Wheel Straps
- Allen Wrench
- Mounting Bolt



Pro-Series **PowerWheel™**

You have your hands on your wheel more than any other part of your boat - so don't settle for anything but the best! Edson's PowerWheels are one of the best ways to upgrade the look and feel of your boat. Edson PowerWheels™ feature a classic design blended with contemporary styling - the perfect accessory for any boat.



Photo courtesy Viking Yachts

Features:

- Built of Marine Grade 316 Stainless or Cast Bronze.
- Classic Tri-Spoke Design looks great on any boat.
- One piece casting — no rough welds or joints.
- Easy-hold Finger Grip on Wheel Rim provides precise control and comfort.
- Will accommodate Edson's popular Pro-Series PowerKnob™ for even greater control!
- Marine grade Stainless keeps its shine even in the toughest marine environments.
- Cast Bronze is polished and will turn a classic patina over time if not polished.
- Precisely designed for cockpits, consoles, flybridges and towers.
- Fits Standard Powerboat Wheel Shafts.
- Premium boatbuilders worldwide demand Edson wheels for their boats — you should too!



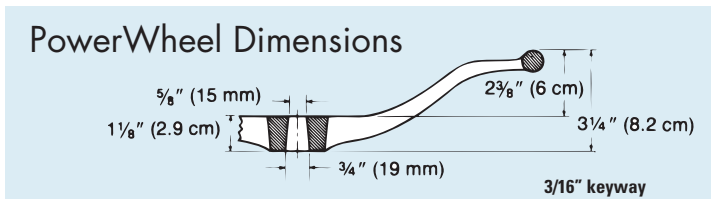
**All Edson PowerWheel Kits
include a Stainless Wheel Nut!
(Will fit 12mm or 5/8"-18
threads with included insert)**

Stainless ComfortGrip™ PowerWheel - Polished

The perfect combination of durability, good looks and soft feel! Edson's ComfortGrip PowerWheels feature a unique rubber finger grip insert that provides precise control and ultimate comfort. And with the optional ComfortGrip PowerKnob, you also get the ultimate in control. Includes Stainless Wheel Nut with inserts for 12mm & 5/8"-18 threads.



13" Polished Stainless Wheel & Nut	#1710ST-13-75T
13" Wheel, Nut & ProSeries PowerKnob	#1710ST-13-KIT
13" Wheel, Nut & ComfortGrip PowerKnob	#1710ST-KITCG
14.5" Wheel & Nut	#1710ST-14.5-75T
14.5" Wheel, Nut & ProSeries PowerKnob	#1710ST-14-KIT
14.5" Wheel, Nut & ComfortGrip PowerKnob	#1710ST-14-KITCG
16" Wheel & Nut	#1710ST-16-75T
16" Wheel, Nut & ProSeries PowerKnob	#1710ST-16-KIT
16" Wheel, Nut & ComfortGrip PowerKnob	#1710ST-16-KITCG



Stainless ComfortGrip™ PowerWheel - Satin Finish

We've given our classic tri-spoke ComfortGrip Powerwheel a Satin finish that is silky-smooth but without the bright glare of polished stainless. Includes Stainless Wheel Nut with inserts for 12mm & 5/8"-18 threads.



13" Satin Finish Wheel & Nut	#1710WB-13-75T
13" Wheel, Nut & ProSeries PowerKnob	#1710WB-13-KIT
13" Wheel, Nut & ComfortGrip PowerKnob	#1710WB-KITCG
14.5" Wheel & Nut	#1710WB-14.5-75T
14.5" Wheel, Nut & ProSeries PowerKnob	#1710WB-14.5-KIT
14.5" Wheel, Nut & ComfortGrip PowerKnob	#1710WB-14-KITCG
16" Wheel & Nut	#1710WB-16-75T
16" Wheel, Nut & ProSeries PowerKnob	#1710WB-16-KIT
16" Wheel, Nut & ComfortGrip PowerKnob	#1710WB-16-KITCG

NEW!



Two-Spoke Comfort Grip PowerWheel

Edson's Dual-Spoke Stainless ComfortGrip™ PowerWheel is available in 14.5" diameter and features a split, dual-spoke design that is a contemporary update to the classic style popular on sportfishing boats and offshore "battle wagons". The large, open area inside the wheel rim also provides unobstructed views and access to dash-mounted electronics and controls.

Discerning boat owners and builders can personalize the wheel by engraving or laser etching a company logo or boat name on the wheel hubcap for a nominal charge. They are available with a standard 3/4" tapered hub to fit most popular powerboat helms and can be custom bored for an additional charge to fit up to 1" straight shafts.

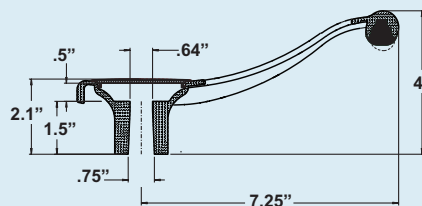
- 14.5" SS Dual Spoke PowerWheel #1730ST-14.5-75T
- 14.5" SS Dual Spoke PowerWheel w/ Pro Series Knob #1730ST-14-KIT
- 14.5" SS Dual Spoke PowerWheel w/ CG Knob..... #1730ST-14-KITCG
- 14.5" SS Dual Spoke PowerWheel - Satin Finish #1730WB-14.5-75T
- 14.5" SS Dual Spoke PowerWheel Stain w/ Pro Series Knob #1730WB-14-KIT
- 14.5" SS Dual Spoke PowerWheel - Satin w/ CG Knob..... #1730WB-14-KITCG



Features:

- Modern Two-Spoke Design looks great on any boat.
- Marine grade 316 Stainless keeps its shine even in the toughest marine environments.
- Satin finish available.
- One piece casting — no rough welds or joints.
- Easy-hold ComfortGrip™ Finger Grip on Wheel Rim provides precise control and comfort.
- Will accommodate Edson's popular Pro-Series PowerKnob™ for even greater control!
- Precisely designed for cockpits, consoles, flybridges and towers.
- Fits Standard Powerboat Wheel Shafts.
- Premium boatbuilders worldwide demand Edson wheels for their boats — you should too!

Two-Spoke PowerWheel Dimensions





13" Bronze PowerWheel

The 13" Edson Bronze PowerWheel is sure to dress up any boat - especially a classic sportfish or wooden runabout. Solid cast bronze construction is highly polished to a mirror finish, giving a deep, rich golden glow. Includes Brass Wheel Nut with inserts for 12mm & 5/8"-18 threads.

13" Bronze Wheel & Nut#1700BR-13-750T

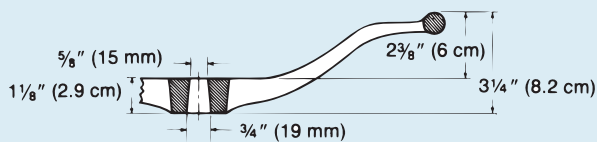
Teak Rim PowerWheel

This elegant design is perfect for dressing up a flybridge or pilothouse. Varnished teak rim has solid almag center for strength. Easily removable for revarnishing. Available in Silver Almag or Black Powder-coated Almag in both 3/4 tapered and 1" straight bores.



- 16" Teak Rim PowerWheel - Silver - tapered bore #972STK-16-750
- 16" Teak Rim PowerWheel - Silver - straight bore #972STK-16-100
- 16" Teak Rim PowerWheel - Black - tapered bore #972BTK-16-750
- 16" Teak Rim PowerWheel - Black - straight bore #972BTK-16-100

Bronze & Teak PowerWheel Dimensions



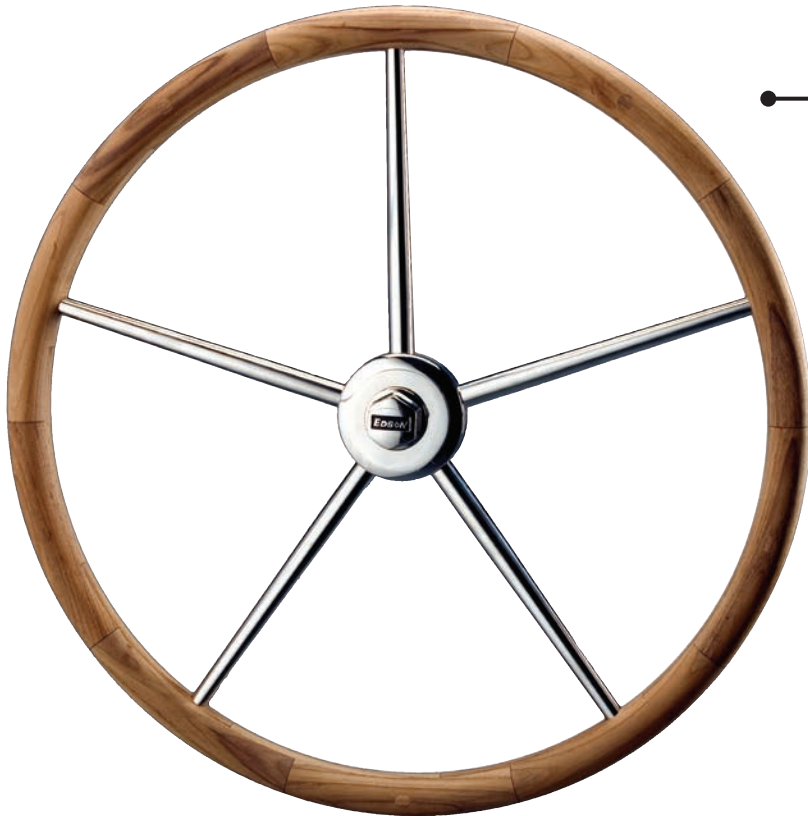
**Edson recommends
PRISM POLISH
for all Polished
Stainless & Bronze**



Prism Polish 6oz. Jar.....#2475

Photo courtesy Ocean Yachts





Destroyer Wheels

Classic Edson Destroyer Wheels will add distinction and value to any boat. Available in sizes ranging from 18" to 48", they have a timeless look, comfortable rim shape and precision-machined hub for an exact fit. Available with stainless or teak rims or with optional Leather Rim Cover, in Tan or Gray. Features hub bored for standard powerboat taper. Also available with 1" straight hub.

Features:

- Built of highly polished marine-grade stainless
- Attractive dished shape and newly styled hub.
- Lightweight yet extremely strong
- Tapered, hollow spokes for an elegant look.
- Available with Teak Rim for the ultimate in beauty and comfort!
- Hubs available to accommodate standard powerboat taper or 1" straight wheel shafts.
- Wheel adapters available to fit most other shaft sizes.



 TRUE NORTH

*"We want our owners to feel their boat's soul.
How better than with an Edson wheel."*

Clive Dent
Chief Designer - True North 38



**See page 15 for
Edson Wheel Nuts**

Stainless Dished Destroyer™ Wheel

The classic Edson Destroyer™ Wheel will add distinction and value to any boat. Available in sizes ranging from 18" (457mm) to 48" (1210mm), they feature an attractive dished shape and tapered hollow spokes. The "D" shaped rim is comfortable in your hands and the optional Leather Wheel Rim Cover (see leather covered version below) will make those long hours at the helm less tiresome. Edson Destroyer Wheels feature a hub bored for standard powerboat tapered shafts (1" straight shaft also available).

Stainless Destroyer Wheel #1750ST
 (Specify Diameter - 18", 20", 22", 24", 26", 28",
 30", 32", 36", 40", 44", 48")
 Optional Wheel Nut See pg 15 for styles and sizes



Teak Rim Dished Destroyer™ Wheel

Edson's New Teak Rim Destroyer Wheels are warm to the touch, elegant in appearance and feather light. It adds the ultimate touch of class to the yacht of distinction. Edson's Teak Rim Destroyer Wheels are available in diameters from 18" - 28". Hand-made teak rim is sanded smooth, ready for the finish of your choice.

- Attractive dished-shape and newly styled hub.
- Tapered, hollow spokes.
- 1-1/8" laminated solid teak rim.
- Delivered with natural teak, ready for each individual's preferred finish.

Teak Rim Destroyer Wheel #1750TK
 (Specify Diameter - 18", 20", 22", 24", 26", 28")
 Optional Wheel Nut See pg 15 for styles and sizes



Leather Covered Dished Destroyer™ Wheel

Edson's 5 & 7 Spoke Stainless Destroyer Wheels are also available pre-covered with our Highest Quality Leather Rim Covers, available in both Buck Tan or Dove Gray. The Orthopedic Grade cowhide is thick, supple and will feel warm in cool weather and cool when the hot sun heats up your wheel.

- Same high-quality construction as Stainless Wheel
- Available in Tan or Gray
- Available in Standard or Comfort Grip™ Leather

Leather Covered Destroyer Wheel #1750LE or #1750CG
 (Specify Diameter - 18", 20", 22", 24", 26", 28",
 30", 32", 36", 40", 44", 48")
 Optional Wheel Nut See pg 15 for styles and sizes



Please Note: The Buck Tan Wheel Cover is dyed leather. Although it is of the highest quality, it will eventually fade over time to a gray color if the wheel is not covered. Edson recommends a complete wheel or pedestal cover for protection from the elements to retain the tan color of the leather.



Classic Teak Yacht Wheel with Teak Rim

In production for over 150 years, Edson's Classic Yacht Wheels belong on any classic yacht or stately passagemaker. Created by third-generation master craftsmen, the skills and artistry that go in to making these wheels have been passed down from generation to generation, ensuring a consistency and quality that can only be attained by the hand-crafted talents of their builders.

Although extremely elegant, the Edson Teak Wheels are not just a showpiece for a wall. They are handcrafted to the highest offshore-quality standards, and will provide years of service for the classic yacht. They feature solid teak spokes and felloes rigidly secured with stainless fasteners and holly bungs. The wheel is delivered with varnished inner rim and spokes. The laminated 1" diameter destroyer-type rim is installed with stainless fasteners and holly bungs to the solid teak spokes and is unvarnished, ready for each individual's preferred finish. This creates an elegant wheel that keeps the traditional look yet has a modern appearance and styling.

These wheels will be the centerpiece of your cabin or cockpit and the first thing visitors to your yacht will notice.

Order #603CH (shown)
Specify Bronze (BR) or Chrome (CH) Hub
(See ordering guide for sizes)

Features:

- Offshore Quality
- Hand built by 3rd Generation Craftsmen
- Hub available in Polished Bronze or Chrome
- Fits 1" / 2.5cm straight shafts.
- Made from only the finest teak and cast bronze.
- Matching Stainless Wheel Nut available.
- Precision milled and keyed for exact fit on wheel shaft
- Premium boatbuilders worldwide demand Edson wheels for their boats — you should too!



Burger Boats are handcrafted to each owner's exact specifications – right down to the wheels. When their owners want the best, they choose Edson.

Classic Teak Yacht Wheel

Edson's Classic Teak Yacht Wheel is the original. In production for over 150 years, this is a wheel that belongs on any classic yacht or stately passagemaker.

- Offshore-quality wheel.
- Solid teak spokes and felloes rigidly secured with stainless fasteners and holly bungs.
- Hub available in Polished Bronze or Chrome
- Delivered fully varnished.
- 1"/2.5 cm straight bore only.

Order #601CH

Specify Bronze (BR) or Chrome (CH) Hub
(See ordering guide for sizes)



Character Wheel

Edson's Character Wheels are patterned after the traditional heavy cast iron wheels.

- Manufactured in Edson's own foundry.
- Made of lightweight 356-T6 aluminum.
- Heat-treated to T-6 hardness.
- Feature tan baked-on urethane powder coating and varnished teak handles.
- 1"/2.5 cm straight bore only.

Order #688

(See ordering guide for sizes)



Bronze Wheel w/ Teak Handles

Edson's Bronze Wheel with Teak Handles adds distinction to any traditional boat.

- Manufactured in Edson's own foundry.
- Made of solid bronze.
- Hand-machined and polished.
- Features varnished teak handles.
- 1"/2.5 cm straight bore only.

Order #602BR

(See ordering guide for sizes)



Commercial Bronze Wheel

Edson's Commercial Bronze Wheel. Simplicity is the keynote for this rugged wheel.

- Teak handles and a tumbled bronze finish.
- Measures 19"/48 cm tip to tip.
- Provided with 5"/12.7 cm varnished teak handles.
- Available with either a standard 3/4"/1.9 cm taper or a 1"/2.54 cm straight bore.
- Hub thickness is 1 1/8"/2.9 cm.

Tapered Bore – Order #971T-19-750

Straight Bore – Order #971S-19-100

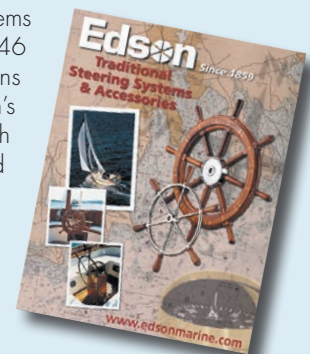


EDSON TRADITIONAL WHEEL ORDERING GUIDE

Wheel Size Inches (cm)	Teak Wheel Order #	Bronze Wheel Order #	Teak Rim Wheel Order #	Character Wheel Order #
20" (50.8 cm)	n/a	602BR-20	n/a	688-20
22" (55.8 cm)	n/a	602BR-22	n/a	n/a
24" (60.9 cm)	601CH or BR-24	602BR-24	n/a	n/a
25" (63.5 cm)	n/a	n/a	n/a	688-25
26" (66.0 cm)	n/a	602BR-26	603CH or BR-26	n/a
28" (71.1 cm)	601CH or BR-28	602BR-28	n/a	n/a
30" (76.2 cm)	n/a	602BR-30	603CH or BR-30	688-30
32" (81.2 cm)	601CH or BR-32	n/a	n/a	n/a
34" (86.1 cm)	n/a	n/a	603CH or BR-34	n/a
35" (89 cm)	n/a	n/a	n/a	688-35
36" (91.4 cm)	601CH or BR-36	n/a	n/a	n/a
38" (99.0 cm)	n/a	n/a	603CH or BR-38	n/a

n/a - wheel not available in this size.

Edson has been building steering systems for yachts and work boats for over 146 years. Many traditional boat designs are still excellent candidates for Edson's Traditional Geared Steerers, which were engineered for the designs and configurations of the day. If you are building or refinishing a classic yacht, Edson's Traditional Wheels and Geared Steerers are still available, but constructed of modern materials and methods which were not available when first built.



For complete information, sizes and specifications, request Edson's Traditional Steering Systems & Accessories catalog.

Custom Power Boat Wheels

Do you have a custom design in mind? Whether for a sportfisherman, trawler or megayacht, we can build a custom wheel to your specifications - or let our designers develop a wheel that will fit your boats styling with custom wood, stainless and carbon.

Call 508.995.9711 today to speak with a custom wheel specialist.



"The Edson comfort grip wheel is a superb, differentiated design. Considering function, quality and Edson brand recognition, the choice was easy."

Rampage Sport Fishing Yachts



Custom Carbon/Wood Laminated Yacht Wheels



This exquisite custom wheel features teak and holly wood laminates, together with areas of beautifully clear-coated carbon-weave laminate. The spokes are carefully sculpted into the teak and holly rim for a very comfortable grip for the helmsman, as well as a robust connection of the spokes to the wheel rim. The wheel rim is constructed of alternating layers of teak and holly creating a beautiful contrast of two classic maritime woods. The level of construction and finish in these wheels is unmatched, and as a result, they quickly become the focal point on the finest vessels. These wheels are coated with multiple layers of clear urethane for a mirror finish. They are available with or without Edson's wheel clutch. Custom faceplate engraving available.



- Hubs available in Black Aluminum or Polished Stainless
- 32" (810mm) to 60" (1500mm) diameters standard, other sizes to suit
- Clear coat for a mirror finish

Order #652



Edson's Carbon / Wood Laminated Wheel features alternating layers of Teak, Holly and Carbon Fibre to form a unique blend of traditional and modern building materials. Hand built by master craftsmen, each wheel is custom built to your specifications. You can choose wood to match your boat's brightwork, deck or interior styling. Custom faceplate engraving available.

- 40" (1015mm) - 80" (2030mm) diameter
- Custom inlay designs available

Order #653

See More Wheels in Edson's *Distinctive Yacht Wheels* Catalog



Since 1859, Edson wheels have graced many of the world's finest yachts. Now for the first time, those wheels are featured together in an all-new catalog, Edson's Distinctive Yacht Wheels. The 28-page brochure showcases Edson's full line of wheels for both power and sail, designed to fit not only Edson Steering Systems, but those built by other manufacturers as well. Featuring wheels for boats of all types, from Megayachts to Tenders, Sportfish to Flats Boats, Coastal Cruisers to Round the World Voyagers, the new catalog shows every wheel in the Edson line, along with photos of many of the yachts on which they have become the focal point. Edson wheels are handmade by master craftsmen with exotic materials including carbon fiber, marine alloys, teak, holly and other hardwoods.

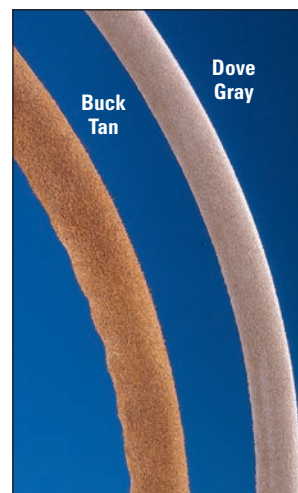
Call or visit www.edsonwheels.com for your copy.

Leather Wheel Rim Covers



Give your wheel the ultimate feel! Edson's do-it-yourself Leather Wheel Covering Kits look great and make any wheel softer and warmer to the touch. Each kit includes a pre-punched leather cover, double sided sticky tape, thread, needle and complete instructions. Measure the diameter of your steering wheel and choose from four convenient sizes. Available in Buck Tan or Dove Gray. Note: All leather kits should be installed suede side out.

"Comfort Grip" Leather Wheel Covering Kits. Create your own luxury steering wheel with Edson's exclusive "Comfort Grip" Leather Wheel Covering Kit. "Comfort Grip" cushions the wheel and has contoured finger grips on the inside of the wheel rim. Measure the diameter of your steering wheel and choose from six convenient sizes. Available in Buck Tan or Dove Gray.



Call or visit EdsonMarine.com for available sizes, styles and colors.

Traditional Wheel Components

Edson's Teak Handles. These varnished teak handles can be used on home built wheels to replace original handles for a finished look. Complete with $\frac{3}{8}$ "-16 stainless carriage bolts. These are the same Handles as those used on Edson's #602, #688 and #971 Traditional Wheels.

- 3½" Teak Handle w/Stainless Carriage Bolt – Order #882-350
- 4" Teak Handle w/Stainless Carriage Bolt – Order #882-400
- 4½" Teak Handle w/Stainless Carriage Bolt – Order #882-450
- 5" Teak Handle w/Stainless Carriage Bolt – Order #882-500

Edson's Wheel Hubs. Make your own traditional mahogany or teak wheels. Available in polished or chrome plated bronze castings. Two-piece design allows for easy assembly. See Ordering Guide.

Wheel Hub Ordering Guide

For Wheels Sizes:	Bronze Hub	Chrome Hub	Hub O.D.	No. of Spokes	Spoke Size
20" /50.1 cm - 26" /66 cm	Order # 667BR-2	Order # 667CH-2	4" (10.2 cm)	6	1.25" (3.2 cm)
28" /71 cm - 34" /86 cm	Order # 667BR-4	Order # 667CH-4	5½" (13.9 cm)	8	1.375" (3.5 cm)
36" /91.4 cm - 42" /106.7 cm	Order # 667BR-6	Order # 667CH-6	6" (16.5 cm)	8	1.375" (3.5 cm)



Teak Handle
#882



Chrome Hub
#667CH



Bronze Hub
#667BR

Wheel Nuts

Attention to detail is the keynote of these Edson Wheel Nuts. Available in highly polished Investment Cast 316 Stainless or traditional Polished Brass. Measure your steering shaft thread for the correct size.

Stainless Wheel Nut with 5/8"-18 Threads..... Order #673ST-5/8-18
 Stainless Wheel Nut with 3/4"-10 Threads..... Order #673ST-3/4-10
 Stainless Wheel Nut with 1"-14Threads..... Order #673ST-1-14
 Stainless Wheel Nut with 12mm-1.75mm Threads.. Order #673ST-12M
 Stainless Nut with 12mm, 1/2-20 & 5/8-18 Threads.... Order #673ST-KIT
 Brass Wheel Nut with 5/8"-18 Threads..... Order #673BR-5/8-18
 Brass Wheel Nut with 3/4"-10 Threads..... Order #673BR-3/4-10
 Brass Wheel Nut with 1"-14 Shaft Threads..... Order #673BR-1-14
 Brass Wheel Nut with 12mm-1.75mm Threads..... Order #673BR-12M



Stainless Wheel Nut
#673ST



Brass Wheel Nut
#673BR

Deluxe Wheel Nut

Edson's Quick Release Wheel Nut was originally created to make it easier to remove steering wheels. Since then, this stylish larger cousin of the original Edson wheel nut has fast become a favorite, even for those that never want to take their wheel off.

- Features superior strength as well as good looks.
- Large 2 1/2" / 6.35 cm diameter provides easy grip.
- Constructed of highly polished investment cast 316 stainless.
- Wt. 1 lb / .45 kg.

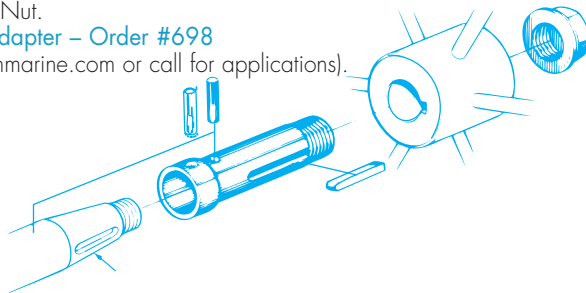
Quick Release Nut with 1/2"-20 Threads..... Order #826ST-1/2-20
 Quick Release Nut with 5/8"-18 Threads..... Order #826ST-5/8-18
 Quick Release Nut with 3/4"-10 Threads..... Order #826ST-3/4-10
 Quick Release Nut with 1"-14 Threads..... Order #826ST-1-14



Wheel Adapters

Edson's Wheel Adapter is a real problem solver. Made of brass and finished with a stainless locking pin and a 1/4" stainless wheel key, the adapter is ideal for installing Edson wheels on other steerers. It's simple and it's strong. Be sure to tell us the make and model of your steerer. Call Edson Customer Service and request Engineering Bulletin EB-95-214-2 for information on the correct adapter for your steerer. Suitable for wheels up to 30" / 76 cm diameter. Supplied with correctly sized Stainless Wheel Nut.

Edson Wheel Adapter – Order #698
 (Visit www.edsonmarine.com or call for applications).



Wheel Adapter
#698

Prism Polish™

The best metal polish we've found for Edson stainless and bronze products. Prism Polish has been formulated to clean, polish and protect all metals in one application. Its protective coating is designed to last 3-6 months and contains no harsh acids, caustics or abrasives; its safe on all metals including stainless and bronze - perfect for polishing and protecting Edson Wheels (stainless and bronze), stainless hardware, parts and fittings, engine control handles, wheel nuts, brake knobs, drink holders, mounting arms - any polished Edson metal part!

Prism Polish 6oz. Jar - Order #2475

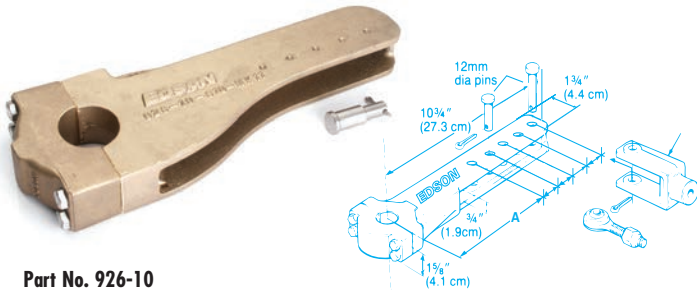




Part No. 926-15

Steering Tiller Arms

The steering system is one of the most important systems on your boat – and Tiller Arms are one of the necessary but unseen workhorses of that system. This critical part must be engineered and built to withstand extreme rudderloads without fail. Edson's cast manganese bronze tiller arms are built to last and are machined to tighter tolerances, assuring a proper fit that won't loosen while underway. A large selection of sizes and length to fit most boats on the market today. See ordering guide on next page for complete specifications and sizes.



Part No. 926-10
Shown bored and keyed

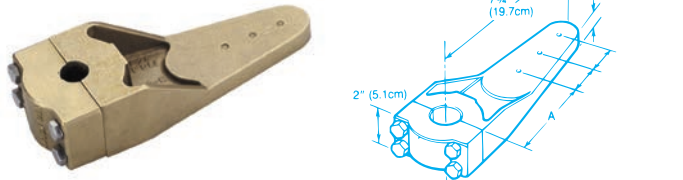
Edson Tiller Arm

- For use on larger motoryachts and commercial vessels.
- 10"/25.4 cm length.
- Constructed of manganese bronze.
- Two piece, cap and arm design allows installation without removing the rudder.
- Accommodates rudderposts to 5"/12.7 cm.
- Accepts clevis fittings with jaw openings of 1 1/8"/4.1 cm.

(Edson recommends Order #619-150 or 619-158)

Order #926-10

(See ordering guide for additional specifications and sizes)



Part No. 836BR-765

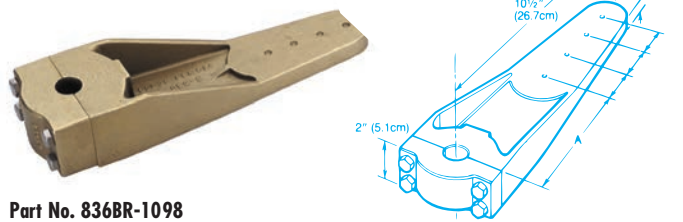
Edson Tiller Arm

- Constructed of manganese bronze.
- Two piece, cap and arm design allows installation without removing the rudder.
- Accepts clevis fittings with jaw openings of 3/4"/1.9 cm.

(Edson recommends Order #619-150 or 619-158)

Order # 836BR-765

(See ordering guide for additional specifications)



Part No. 836BR-1098

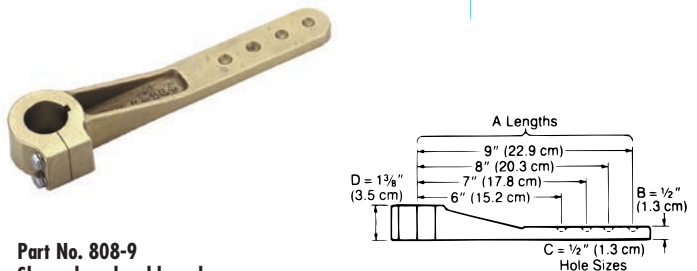
Edson Tiller Arm

- Constructed of manganese bronze.
- Two piece, cap and arm design allows installation without removing the rudder.
- Accepts clevis fittings with jaw openings of 3/4"/1.9 mm.

(Edson recommends Order #619-150 or 619-158)

Order #836BR-1098

(See ordering guide for additional specifications)



Part No. 808-9
Shown bored and keyed

Edson's Split Hub Tiller Arm

- Constructed of manganese bronze.
- Accepts clevis fittings with jaw openings of 5/8"/1.43 cm.

(Edson recommends #619-075-100)

Order #808-9

(See ordering guide for additional specifications)

TILLER ARM ORDERING GUIDE					
Tiller Arm Order #	Max. Size		Max. Bore	Keyway	Weight Each
	Length	Pilot Bore			
	Inches / cm	Inches / cm	Inches / mm	Inches / mm	lbs / kg
808-9	10 / 25.4	15/16 / 2.38	13/8 / 3.49	1/4 / .64	3.5 / 1.6
836BR-765	10.5 / 26.7	7/8 / 2.22	2 / 5.1	3/8 / 1.0	10 / 4.5
836BR-1098	7.75 / 19.7	7/8 / 2.22	2 / 5.1	3/8 / 1.0	8 / 3.6
926-10-24	10 / 25.4	1 / 2.5	1 13/16 / 4.6	3/8 / 1.0	7 / 3.2
926-10-610	10 / 25.4	17/8 / 4.8	3.5 / 8.9	1/2 / 1.3	10.5 / 4.8
926-10-14	10 / 25.4	33/8 / 8.6	5 / 12.7	5/8 / 1.6	14 / 6.4
926-15-24	15 / 38.1	1 / 2.5	1 13/16 / 4.6	3/8 / 1.0	12 / 5.5
926-15-610	15 / 38.1	17/8 / 4.8	3.5 / 8.9	1/2 / 1.3	15 / 6.8
926-15-14	15 / 38.1	33/8 / 8.6	5 / 12.7	5/8 / 1.6	19 / 8.6



Tech Tip

Tiller Arms must be positively secured on the rudderpost in addition to the tight clamping tolerance.

This can be done by:

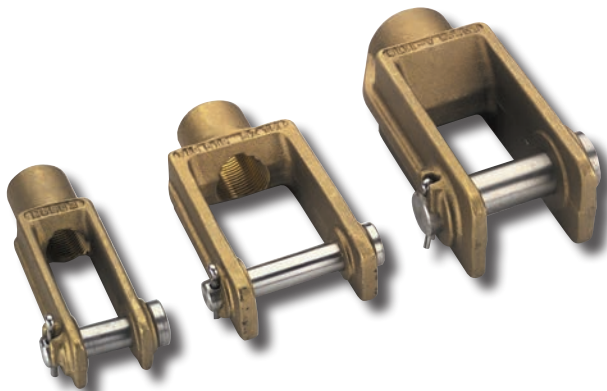
- 1) Securing the Tiller Arm to a solid rudderpost stock by cutting a keyway in the rudderpost and in the Tiller Arm.
- 2) Through-pinning the Tiller Arm to a hollow rudderpost. Edson will provide a pre-drilled Tiller Arm cap and a 3/8" / 1.3 cm stainless pin.
- 3) Securing with set screws by drilling and tapping into the quadrant cap and the rudderpost (be it solid or hollow). Please specify the method of securing when ordering.

NOTE

When Ordering Tiller Arm Specify:

- Rudderpost diameter specified to 3 decimal places (2.376").
- Specify method used to secure Tiller Arm to rudderpost. See Tech Tip for details.
- For additional information request Engineering Bulletin EB-373-97.

Clevises



Edson's Bronze Clevises:

- Commonly used in hydraulic and push-pull steering and autopilot systems.
- Constructed of manganese bronze.
- Available in three sizes.
- Bore is fully threaded.
- Additional thread sizes available on special order.
- Depth of jaw is 2 3/8" / 5.56 cm from pin center.

Order #619

(See Ordering Guide for sizes)

BRONZE CLEVIS ORDERING GUIDE

Order #	Jaw Width	Standard Thread	Pin Size
619-075-100	3/4" (19 mm)	3/4-16	1/2" (12 mm)
619-150	1 1/8" (41 mm)	1-14	3/2" (12 mm)
619-158	1 3/8" (41 mm)	1 1/4-12	3/4" (19 mm)

Note: Other thread sizes available on special order.

Drag Links

Edson's Drag Links make twin rudder installations easy. Each Drag Link is manufactured from the highest quality materials. Stainless steel bar stock is used for its superior strength and corrosion resistance and the Clevises are made of manganese bronze to fit virtually any tiller arm. Choose from Edson's standard configurations or provide us with your specifications and we will build what you need.

Order #617 (See Ordering Guide for sizes)

DRAG LINK ORDERING GUIDE

Order #	"A" Dimension		Weight	
	Inches	cm	lbs	Kg
617-(**)-3642	36-42	91-106	8	3.6
617-(**)-4248	42-48	160-121	9	4.1
617-(**)-4854	48-54	121-137	10	4.5
617-(**)-5460	54-60	137-152	11	5

** Order size 75 for 3/4" / 1.9 cm rod, size 100 for 1" / 2.5 cm rod or size 125 for 1 1/8" / 3.2 cm rod.

Example: 617-75-4248 = a 42-48" Drag Link with a 3/4" / 1.9 cm rod.



Vision Series Electronics Mounting System

Edson's all-new Vision Series Electronics Mounting System is a revolutionary design that provides the simplest, most attractive solution to your electronics mounting requirements.

- All-new sleek, modern design.
- First all modular system — extremely versatile.
- Simple selection for any radar, dome, light or camera combination — easy to select and install.
- Easy to add accessories.
- Upgradable for future additions and modifications.
- Powder Coated Aluminum Construction



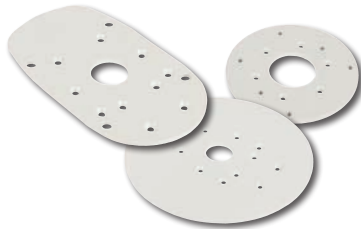
Visit edsonmarine.com for Edson's full NavCom Tower Selection

EASY THREE STEP ORDERING

Select Mount Style and Height



Select Mounting Plate



Select OPTIONAL Light Arm/Wing/Accessories



Step #1

Select Mount Style and Height

Radar or Satellite Dome Mounts - Angled

- 6", 12", 18", 24" and 36" tall
- Aft Raked 30 degrees
- Powder Coated Aluminum
- Optional Light Arm
- Optional Antenna Mounting Wing
- Mounting Plates for all Antennas



Radar or Satellite Dome Mount - Vertical

- 6", 12", and 18"
- Vertical
- Powder Coated Aluminum
- Optional Light Arm
- Optional Antenna Mounting Wing
- Mounting Plates for all Antennas



DESCRIPTION

DESCRIPTION	ITEM #
6" Angled Radar or Sat Dome Mount	#6801
12" Angled Radar or Sat Dome Mount	#6802
18" Angled Radar or Sat Dome Mount	#6803
24" Angled Radar or Sat Dome Mount	#6804
36" Angled Radar or Sat Dome Mount	#6805

DESCRIPTION

DESCRIPTION	ITEM #
6" Angled Radar or Sat Dome Mount	#6873
12" Angled Radar or Sat Dome Mount	#6874
18" Angled Radar or Sat Dome Mount	#6875

#6801 Shown with optional accessories



#6873/6871



#6873/6868



Triple Mounts

- First production Triple Mount
- For Radar Dome/Sat Dome or Open Array/Sat Dome + Spot Lights, Cameras or Night Vision
- Powder Coated Aluminum
- 36" tall
- Aft Raked 30 degrees
- Optional Light Arm
- Optional Antenna Mounting Wing
- Mounting Plates for all Antennas



DESCRIPTION	ITEM #
36" Triple Mount for Radar Dome/Sat Dome	#6830
36" Triple Mount for Open Array/Sat Dome	#6835

* Three mounting plates required



#6830 Shown with optional accessories

Dual Mounts

- For Radar Dome/Sat Dome or Open Array/Sat Dome
- 18" (sat dome) and 24" (open array)
- Powder Coated Aluminum
- Aft Raked 30 degrees
- Shown with optional Light Arm
- Optional Antenna Mounting Wing
- Mounting Plates for all Antennas



DESCRIPTION	ITEM #
18" Dual Mount for Radar Dome/Sat Dome	#6820
24" Dual Mount for Open Array/Sat Dome	#6825

* Two mounting plates required

For Dual and Triple Mounts, choose Radar Dome or Open Array Styles

Mast Mount Radar Platform

- For Sailboats and Trawlers
- Powder Coated Aluminum
- Swivel Feet fit most masts
- Rivets Included
- Mounting Plates for all Radar and Satellite Domes.



DESCRIPTION	ITEM #
Mast Mount Radar Platform	#6867



Photo courtesy Formula Yachts

Step #2

Select required Mounting Plate(s) by electronics manufacturer



UNIVERSAL FIT

	ITEM#
2/4kW and Broadband Radars (most brands and models)	#6850
Universal Mounting Plate, 15" Dia., no pre-drilled holes	#6886

ACR

	ITEM#
ACR RCL-100, RCL-50 Series Lights	#6868

FLIR

	ITEM#
Flir Mariner	#6869
FLIR Navigator II	#6870
Flir M-Series	#6871

FURUNO

	ITEM#
Furuno 15"- 24" Radar Domes 2/4 kW	#6851
Furuno 4'/6' Open Array Radar	#6851

GARMIN

	ITEM#
Garmin 18" & 24" HD Dome 4 kW Radar	#6852
Garmin 4'/6' Open Array Radar	#6856

INTELLIAN

	ITEM#
Intellian i1, i2, i3	#6860
Intellian i4, K4, d4	#6859
Intellian i6, K6, d6, S60, FB500	#6861
Intellian FB150, FB250	#6872

KVH

	ITEM#
KVH M1, M2, M3	#6860
KVHTV M5, Trac 50	#6859
KVHTV M7, HD7, TracPhone V7, F55	#6861
KVH FB150, FB250 for 10.8" and 13.5" diameter domes	#6872

LOWRANCE

	ITEM#
Broadband 20" Dome and 2kW Radar Dome	#6853
Lowrance HD Dome 4kW Radar	#6854
Lowrance 4'/6' Open Array Radar	#6857

NOBELTEC

	ITEM#
Nobeltec IR2-4D Dome, IR2-4x, 6x, 12x Array	#6885

NORTHSTAR

	ITEM#
Broadband 20" Dome and 2kW Radar Dome	#6853
Northstar HD Dome 4kW Radar	#6854
Northstar 4'/6' Open Array Radar	#6857

RAYMARINE

	ITEM#
Raymarine 2/4 kW Radar Dome	#6855
Raymarine 4'/6' Open Array Radar	#6858
Raymarine 33&37STV	#6860
Raymarine 45STV	#6859
Raymarine 60STV	#6861
T-Series Night Vision T300-T450	#6871

SEA KING

	ITEM#
Sea King 15	#6860
Sea King 18	#6859

SEA TEL

	ITEM#
Sea Tel C14	#6860
SeaTelC18-24	#6859

SIMRAD

	ITEM#
Broadband 20" Dome and 2kW Radar Dome	#6853
Simrad HD Dome 4kW Radar	#6854
Simrad 4'/6' Open Array Radar	#6857

SI-TEX

	ITEM#
Si-Tex 2/4 kW Radar Dome	#6851
Si-Tex MDS-10 4' Open Array Radar	#6857

NOTE: Please contact Edson if your brand is not shown.



Photo courtesy Intrepid Boats

Step #3

Select optional Adapters. Light Arms, Mounting Wings and Accessories

#6863



#6879



Receiver or Wing is required to mount Light Arms



LIGHT ARM RECEIVERS

Light Arm Receiver for aft angled mounts
Light Arm Receiver for vertical mounts

ITEM#

#6863
#6879

ANTENNA MOUNTING WINGS

Antenna Mounting Wing for aft angled mounts
Antenna Mounting Wing for vertical mounts

ITEM#

#6864
#6880



(shown with optional Anchor Light)



#6865

#6866

LIGHT ARMS

Light Arm for Radar Domes and Sat Domes
Light Arm for Open Array Radars

ITEM#

#6865
#6866



#980-3-100



#6740

(shown with optional Anchor Light and Antenna)

ANTENNA / LIGHT EXTENSIONS

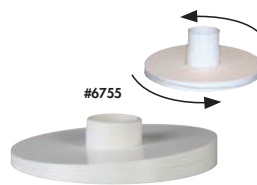
3" Antenna Extension for Wing
13" Antenna Extension for Wing
GPS Mount with Light Extension

ITEM#

#980-3-100
#980-13-100
#6740



#6760



#6755

ADDITIONAL ACCESSORIES

Wedge Kit for 0-4° angle adjustment - 7" diameter
Vision 4 degree wedge for under mounting plate
Witches Hat, black rubber for water protection under mounts
Mast Mount Platform Standoff for Spinnaker Track (pair)

ITEM#

#6755
#6881
#6884
#6760



#6750



#6751

ANCHOR / STEAMING LIGHTS

Perko Anchor/Steaming Light (incandescent) - 50" pigtail
Atwood Anchor/Steaming Light (LED) - 72" pigtail

ITEM#

#6750
#6751

Instrument Display Housings



#2000-10x10
Chartplotter Housing

The compact design of the new LCD Radars make them ideal for use in the cockpits of sailboats and powerboats. However, their mounting options are limited and critical wiring is often exposed. That's why Edson has designed Custom Housings for Radar and Chartplotter Displays. They add a ship shape appearance, protect the back of the displays, and provide a more robust mount. They allow Pedestal, Overhead, Deck/Bulkhead, Console, and Pod Arm Mounting Options.

Visit edsonmarine.com for Edson's full Instrument Housing Selection





Dinghy Davits

Edson's Stainless Davits keep your dinghy up and out of the water, and look great doing it! Marine-grade stainless construction with 5:1 lifting tackle makes them robust and convenient to use. Optional mounting shoes allow for easy removal when in storage or not being used. 250lb capacity.

Features:

- Built of highly polished, marine grade 316 Stainless.
- Includes 33' lifting line, blocks and cleats.
- Optional Stainless Mounting Shoes allow for ease of mounting and removal.
- 5:1 Lifting Tackle included.
- Optional Connecting Bar available for added support and rigidity.
- Positive-locking Spinlock™ cam-cleats holds lifting tackle securely.
- Long 40.5" (103cm) reach and 31" (79cm) rise make lifting and storage of most all dinghies possible.
- 250 lb (113 kg) capacity.



IMPORTANT

- Practical lifting capacity of a davit rigged with a 5:1 purchase is 250 lbs (113 kg).
- Davits must be properly installed with backing plates to provide adequate strength.
- The total weight of the dinghy and motor should not exceed the safe working load of one davit or 250 lbs (113 kg).
- Custom brackets or slings may be required to fit specific installations and dinghies.

CAUTION

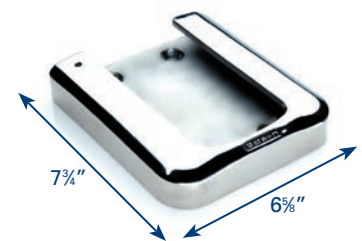
Water should not be allowed to collect in the dinghy or inflatable while being held in Davits. Dinghy should be covered or equipped with a drain to allow water to escape. Failure to do so could damage the davits and dinghy. A dinghy on davits should not extend beyond the sides of the boat to prevent catching water when rolling or heeling.

Stainless Davit Ordering Information

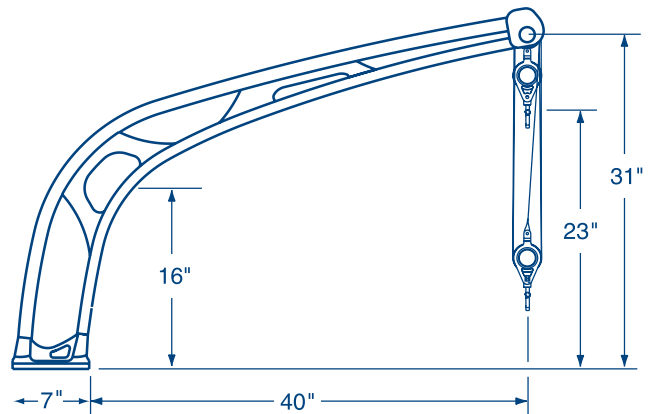
Edson Stainless Davit (2 required) - Order #500ST4030
 Optional Stainless Mounting Shoe (2 required) - Order #508ST78
 Optional 5' Stainless Connecting Bar - Order #513ST1125-60
 (custom length Connecting Bars available)



Optional Mounting Shoe



Actual Davit Foot measures 7-1/8" x 5-3/4"



Bronze House Markers

Edson's Traditional Bronze Housemarkers are an excellent way to add classic beauty to any home or business entryway. When allowed to age naturally, each Housemarker will acquire a classic patina.

Cast from hand-carved patterns, these plaques represent six traditional East Coast sailing vessels from the late 19th and early 20th century, as well as a Striped Bass, a classic lobster boat and a nautical compass rose. Each is modeled to scale, in full relief and shows details of the actual vessel or fish.

The Edson/Anbar Foundry has hand cast and tumbled the bronze plaques to a low-lustre finish ready to be engraved to your specifications. Bronze mounting screws are included and engraving is available in Roman typeface for an additional charge. Please include clear engraving instructions with your order. 15 characters maximum, including spaces. Please allow 3-4 weeks for delivery. Engraving charges extra.



Beetle Cat
Order #3205
10" x 12-3/8"



Lobster Boat
Order #3207
14-1/4" x 8-1/2"



Friendship Sloop
Order #3202
10" x 10"



Visit www.edsonmarine.com to download an engraving order sheet.



Herreshoff 12 1/2
Order #3206
9-7/8" x 11-1/2"



Mount on Your Home Deck!

Compass Rose
Order #3150
9" diameter



Cape Cod Catboat
Order #3201
9" x 11"



Chesapeake Bay Skipjack
Order #3203
10" x 9-1/2"



Striped Bass
Order #3204
14-7/8" x 8-1/2"



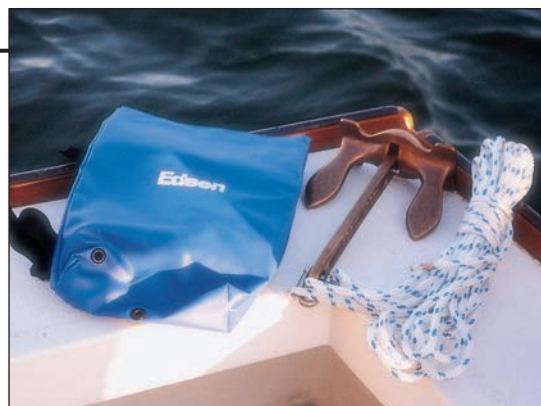
Tancook Whaler
Order #3200
10" x 9-1/2"

Bronze Dinghy Anchor

Remember those great navy anchors of yesteryear? They were as functional as they were good looking. Now Edson has reintroduced the design as the perfect dinghy anchor. Its' cast bronze construction will last for generations. This Bronze Dinghy Anchor weighs 6 pounds (2.7 kg) and comes complete with 33 ft (10 m) of $\frac{5}{16}$ " braided line and a handy stowage bag that mounts to the underside of most seats. Wt. 8 lb (3.6 kg).

[Bronze Dinghy Anchor with Bag and Line – Order #522-6](#)

[Bronze Dinghy Anchor without Bag and Line – Order #522-6LL](#)



Edson Bronze Spline Weights

Edson is pleased to present Bronze Spline Weights for use by yacht designers, boatbuilders, and design students. These classic design tools are used in conjunction with long, flexible battens or 'splines' to draw fair curves while drawing a boat's lines and during the lofting process.

The past is present. This yacht design tool of a bygone era is a proven invaluable tool for design students in the computer age. They are also a practical tool for boat builders, as generating full size plans for construction often requires ducks and battens on the lofting floor. They also make a great gift item, paperweight or conversation piece.

Edson's version of the timeless tools are cast in our own New England foundry and feature a padded felt bottom and the traditional "duck" or "whale" design. They have side indents for easy handling, as well as a slightly raised "tail" for lifting and repositioning. Each one weighs 3 lbs, 10oz. (1.65kg) and are 7-1/4" long x 1-7/8" wide.

- Solid Cast Bronze
- Padded felt bottom
- Side Indents for easy handling
- Raised 'tail' for lifting and repositioning
- Weight : 3lbs., 10oz.
- Dims: 7-1/4" long x 1-7/8" wide



[Set of Six Bronze Spline Weights - Order #3500-SET](#)

[Individual Bronze Spline Weight - Order #3500-1](#)

Cast Bronze Nautical Stars

The Nautical Symbol of Guidance, Protection, Love and Affection.

These classic Nautical Stars are cast in solid bronze and are either highly polished to a golden lustre, or chrome-plated for a gleaming silver look. They are perfect for plaques, add a nautical touch to homes when mounted to railing posts or doors, or make a perfect desk paper weight for your favorite boater. Any where you want that classic nautical look, these stars are the perfect accessory.

They measure 6" (152mm) in diameter and stand 1" (25mm) proud. Each weighs a hefty 1.2lbs (.54kg) and have a 1/4" threaded hole in the back center for mounting.

[Polished Bronze Nautical Star – Order #3300-BR-6](#)

[Chromed Bronze Nautical Star - Order #3300-CH-6](#)



Ideal for:

- Award Plaques
- "Nautical" Home Railing Posts
- Boat Transom Names
- Paper Weights
- Door Decorations
- The Perfect Gift for Any Boater

Edson One-Step™ Boarding Step

If the deck of your boat seems to be getting higher and your dinghy seems to be getting lower, get Edson's "One-Step Boarding Step". Edson makes getting on board safer and easier. Cast in aluminum and coated with durable, glossy-white baked on urethane coating, this Step is designed to hang against the side of your boat. It has neoprene bumpers that won't mar your topsides, and the built-in handles give you a secure handhold. Comes complete with 6 ft. of braided line with stainless snap shackles. Wt. 5 lb (2.3 kg).

[One-Step Boarding Step with Line – Order #520-14](#)
[One-Step Boarding Step without Line – Order #520-14LL](#)



Edson Oar-Loc™

Cast in bronze, this convenient oar locking device is ideal for those who want to leave their oars safely with the dinghy at yacht clubs or public docks. Edson's unique design is easy to operate because the lock is on the top of the seat. You can also lock up your oarlocks by drilling two more holes and putting your oarlocks under your oars. Lock not included. Wt. 1.35 lb (.6 kg).

[Edson Oar-Loc™ – Order #523-2](#)



Leather Chafing Gear

Edson's Leather Chafing Gear is ideally suited for protecting mooring lines, anchor ropes, dock lines.

TAN LEATHER

2½ Sq. ft Order #858TAN-2.5
 5½ Sq. ft Order #858TAN-5.5
 11 Sq. ft- Order #858TAN-11
 22 Sq. ft Order #858TAN-22

GRAY LEATHER

2½ Sq. ft Order #858GRAY-2.5
 5½ Sq. ft Order #858GRAY-5.5
 11 Sq. ft Order #858GRAY-11
 22 Sq. ft- Order #858GRAY-22



*Gray leather is not always available—call for availability.

Stainless Antenna Standoffs



These strong and attractive standoffs will limit the amount of wear and tear on your antennas while powering through rough seas. Made from investment cast 316 stainless, they will never break like plastic.

Fitting all antennas up to 1.5" in diameter, they are available in three sizes, virtually eliminating the need to shim the standoff or antenna base. The clasp is held closed with a quick release pin allowing for quick antenna takedown to go under bridges or for trailering. Each clasp is padded providing a secure, rattle free closure.

Order by the desired stand-off distance (to center of antenna)

[3" Standoff – Order #535-3-125 Wt. 1.3 lb \(.6 kg\)](#)
[5" Standoff – Order #535-5-125 Wt. 1.5 lb \(.7 kg\)](#)
[7" Standoff – Order #535-7-125 Wt. 1.7 lb \(.8 kg\)](#)

Stainless Drink Holders

Edson's newest drink holder is cast from solid marine-grade stainless and is available in single, double or triple versions. The elegant design can be mounted to any surface where you need a secure drink holder and is an open design to accommodate coffee cup handles. Will also fit Koozies, cans and large cups up to 3-3/8" diameter. Direct Mount versions feature installed threaded studs for a secure through-bolt installation and a locator stud keeps them from turning. Sits 3" high when installed.

Direct Mount

- Single Stainless Drink Holder - HorizontalOrder #878ST-1
- Single Stainless Drink Holder - Vertical Order #878ST-1V
- Double Stainless Drink HolderOrder #878ST-2
- Triple Stainless Drink Holder.....Order #878ST-3

Teak Base w/ Rubber Feet

- Single Stainless Drink Holder..... Order #878TK-1
- Double Stainless Drink Holder Order #878TK-2
- Triple Stainless Drink Holder..... Order #878TK-3

White Poly Base w/ Rubber Feet

- Single Stainless Drink HolderOrder #878WH-1
- Double Stainless Drink HolderOrder #878WH-2
- Triple Stainless Drink Holder.....Order #878WH-3



878ST-1



878ST-1V



Threaded stud for mounting and locator pin to keep from rotating. Washer and nut included.



878ST-2



878ST-3



878TK-3



878WH-3



Stainless GPS Antenna Rail Mount
#831ST-1-14

Stainless Rail Clamps

Edson's has a large selection of stainless clamps for 1", 1-1/8" and 1-1/4" railing. They can be used to mount instrument housings, electronics brackets, custom drink holders and ditty boxes, antennas and much more. All are cast in 316 marine-grade stainless and precision machined for tight clamping tolerances.



Clamp-On U-Mount
for 1", 1-1/8" & 1-1/4" Guard Pipes
#861-100-125



Ball Mount
for Instrument Housings
(hollow design for wiring)
#831ST-BALL



Clamp-On Mount
for 1" & 1-1/8" Guard Pipes
#861-100



Clamp-On Table Hardware
for 1" & 1-1/8" Guards
#860-100



Glass Holder/Ditty Box Hardware
for Pedestal Guards
#859-8



Swiveling Clamp-On Accessory Mount - 3" Platform
#832ST-3-125



Clamp-On Table Hardware
for 1-1/4" Guards
#860-125



Swiveling Clamp-On Accessory Mount - 7" Platform
#832ST-7-125



Stainless Horizontal Rail Accessory Mount
with 3" or 5" Platform
#831ST-3-DISK or #831ST-5-DISK



Side Mount Arm
1", 1-1/8" & 1-1/4" Guard Pipes
#831ST-100



Swiveling Accessory Clamp
#861ST-125

Edson recommends
PRISM POLISH
for all Polished
Stainless & Bronze



Prism Polish 6oz. Jar.....#2475

Portable Pump Kits



Bone Dry Portable Pump Kit #165AL-30



Optional Portable Pump Kit Bag #275-31

Edson's Portable Pump Kits are complete pumping systems that include either the 18 GPM #217 Pump or the 30 GPM #117AL Pump mounted on a carrying board with a 32" handle. Quick clamp hose fittings and a single 20' length of hose supplied for optimum configuration by individual.

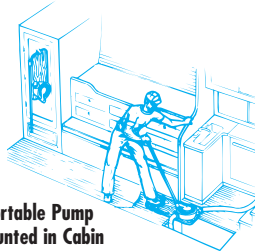
They can be customized with additional hose, a strainer and special couplings to meet specific needs. An optional Pump Kit Storage Bag is available for storing the pump.

Portable Pump Kit – Order #165

See ordering Guide for sizes

PORTABLE PUMP KIT ORDERING GUIDE				
Pump Description	Material	Fitting Size	lbs/Kg	Order #
18 GPM Portable Pump Kit	Aluminum	1-1/2" NPT	8/3.6	165AL-18-150
30 GPM Portable Pump Kit	Bronze	1-1/2" NPT	19/8.6	165BR-18-150
30 GPM Portable Pump Kit	Aluminum	1-1/2" NPT	17/7.7	165AL-30-1.5-KIT
30 GPM Portable Pump Kit	Aluminum	2" NPT	17/7.7	165AL-30-2KIT

30GPM Pump Kits now includes Forespar TruPlug and Bright Orange Storage Bag for added safety!



Portable Pump Mounted in Cabin



Portable Pump in Cockpit

Forespar TruPlug®

TruPlug is a soft, cone shaped plug designed to conform to the irregular and unpredictable shapes of a hull breach - controlling the flow of water while you pump.

Whether it's a round hole caused by mechanical failure, or an elongated tear due to impact, TruPlug adapts to slow or stop the leak. Unlike old fashioned wooden plugs, TruPlug's unique shape allow it to be compressed by hand or cut to fit. It also gets in the hard-to-reach locations and can also be pushed into a gap using a screw driver or similar tool.

Dimensions: 5 inches x 9 inches. The TruPlug is suitable for holes up to four inches in diameter.

One TruPlug for every 10 feet of boat length is recommended. For boats under 30' we recommend two TruPlugs and a minimum of three for any boat in excess of 30'. This allows one TruPlug for a thru-hull/hose failure and provides spares for other holes or to cut in the event of a hull impact breach.

The TruPlug is constructed of proprietary special purpose foam and coated with a flexible sealer adding strength and color.

Forespar TruPlug– Order #287



Diaphragm Pumps

For more than 140 years, the Edson Diaphragm Pump has been the captain's choice for onboard bilge pumping, sewage collection, spill clean up, oil collection and pump-outs of marine sumps, holding tanks and gas tanks. The manual models, because they can pump a lot of water without power, are often used as emergency manual back-up pumps and are recognized by experienced passagemakers and sportfishermen as an absolute necessity for offshore travel. Use Edson's Manual Diaphragm Pumps for small holding tanks and power models for yachts with large systems.

Find out more at www.edsonpumps.com



Edson Pump Features:

- Highest capacity pumps on the market—up to one gallon per stroke.
- 0 – 30 GPM Manual and Powered Pumps.
- Self-priming from dry starts to 15 vertical feet / 3.7 meters.
- Handle solids up to 1.5" in diameter.
- Large flow through inlet and discharge passages for virtual clog-proof operation.
- Reinforced diaphragms and valves = long life (over 30,000 cycles).
- Available in marine grade red bronze or anodized aluminum.
- Available for 1.5"– 2" NPT Ports.
- Built tough for years of service.
- Designed simple for on board maintenance.



Air Powered Pump #120AC

Seat Riser Pump #258



Fixed dock-side Pump Out.



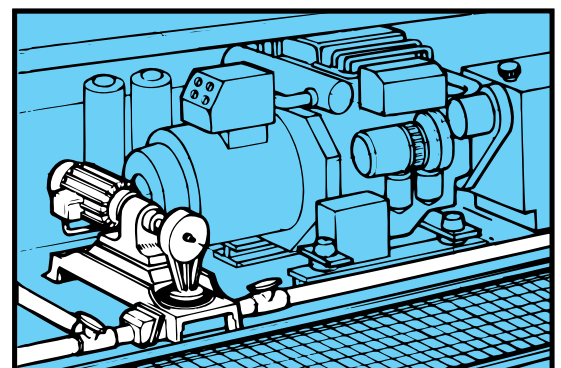
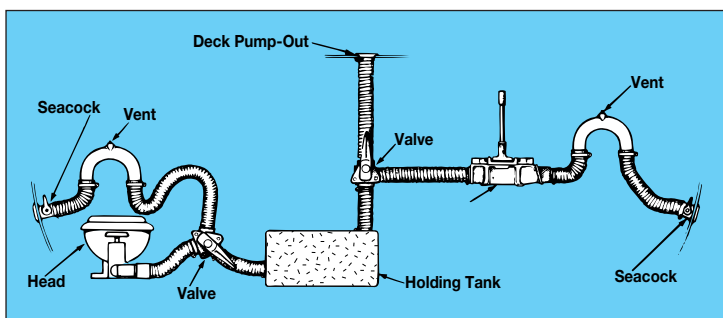
Lever Action Pump #638



Portable Pump Out Caddy



Vertical Mount #256



Edson Pump Hose

1-1/2" Flex Hose ... Order #671FH-150
 2" Flex Hose Order #671FH-200
 1-1/2" Waste Hose Order #268FW-150
 2" Waste Hose..... Order #268FW-200

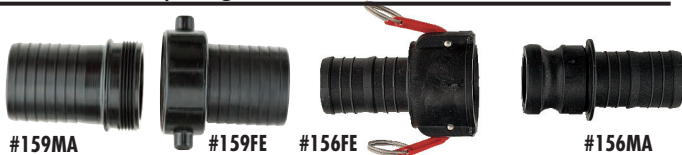


Quick Clamp Pump Out Deck Adapters



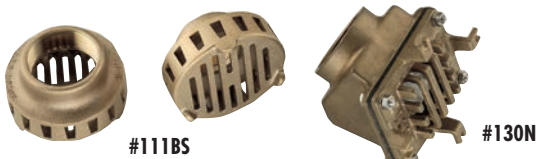
1-1/4" Quick Clamp Deck Fill Adapter Order #273-125
 1-1/2" Quick Clamp Deck Fill Adapter Order #273-150
 Quick Clamp "Splash Guard" Pump Out Nozzle..... Order #272QC-150-SG
 Right Angle Pump Out Nozzle Order #272RA-150

Hose Couplings



1-1/2" Threaded Female Coupling Order #159FE-150NY
 2" Threaded Female Coupling..... Order #159FE-200NY
 1-1/2" Threaded Male Coupling Order #159MA-150NY
 2" Threaded Male Coupling Order #159MA-200NY
 1-1/2" Female Quick Clamp Coupling Order #156FE-150NY
 2" Female Quick Clamp Coupling Order #156FE-200NY
 1-1/2" Male Quick Clamp Coupling..... Order #156MA-150NY
 2" Male Quick Clamp Coupling..... Order #156MA-200NY

Strainers & Foot Valves



1-1/2" Foot Valve/Strainer..... Order #130N-150
 2" Foot Valve/Strainer Order #130N-200
 1-1/2" Bronze Strainer Order #111BS-150
 2" Bronze Strainer Order #111BS-200

Pump Spares Kits

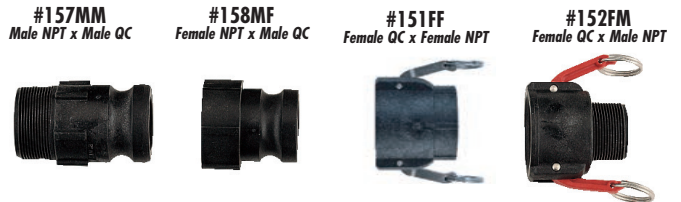
18 GPM Pump Spares Kit	40 GPM Side Inlet Pump Spares Kit	40 GPM Bottom Inlet Pump Spares Kit
For Models 217, 254, 256 & 258 - Order #114N-18-220	For Models 117, 120 & 557 - Order #114N-117-120	For Models 554, 638 & 654 - Order #114N-638-554
Includes: Two #160-A-1207 Valve Assemblies (includes hardware and weights) One #113N-18 Diaphragm	Includes: Two #160-G-107 Valve Assemblies (includes hardware and weights) One #113N-0 Diaphragm	Includes: One #160-G-107 Valve Assembly (includes hardware and weights) One #160-G-108 Valve Rubber One #113N-0 Diaphragm

Check and Ball Valves



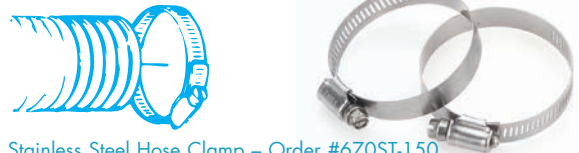
1-1/2" Clear Check Valve/Sight Glass .. Order #269CL-150
 2" Clear Check Valve/Sight Glass Order #269CL-200
 1-1/2" Union Ball Valve Order #264-150
 2" Union Ball Valve Order #264-200

Quick Clamp Threaded Adapters



1-1/2" Male Quick Clamp Adapter Order #157MM-150NY
 2" Male Quick Clamp Adapter Order #157MM-200NY
 1-1/2" Female Quick Clamp Adapter Order #158MF-150NY
 2" Female Quick Clamp Adapter..... Order #158MF-200NY
 1-1/2" Male Quick Clamp Adapter Order #151FF-150NY
 2" Male Quick Clamp Adapter Order #151FF-200NY
 1-1/2" Female Quick Clamp Adapter Order #152FM-150NY
 2" Female Quick Clamp Adapter..... Order #152FM-200NY

Hose Clamps



1-1/2" Stainless Steel Hose Clamp – Order #670ST-150
 2" Stainless Steel Hose Clamp – Order #670ST-200

Stainless 32" Pump Handle



Stainless 32"/81 cm Pump Handle – Order #160-A-41ST
 Available as an Upgrade Option when ordering a Pump –
 Order #230-A-41ST

NEW!

BioFresh™ Cleaning Products



**A CLEANER,
FRESHER BOAT
THE NATURAL WAY!**

BioFresh™ OilEradicator™

**Natural & Environmentally
Safe Products**

**Controls Holding Tank Odors
and Cleans Oily Bilges!**

Naturally occurring, beneficial microbes break down and consume oils, gas, grease, diesel fuel and human & animal waste found in bilges, marinas, lakes and rivers. Let Nature handle the dirtiest jobs on your boat!

BioFresh™ Holding Tank Packets



Simple, drop in packs for holding tank treatment.
ORDER #2400

Oil Eradicator™ Bilge Pad



Absorbs and eliminates oil in your boat's bilge.
ORDER #2410

BioFresh™ Microbial Powder



Surface cleaner and odor eliminator for bilges and holding tanks.
ORDER #2404

Oil Eradicator™ Clean Up Kit



Cleans small oil spills in your bilge or other contaminated areas.
ORDER #2420

BioFresh™ PreWash



Non-toxic soap to emulsify oils and grease. Use with Microbial Powder.
ORDER #2408

Oil Eradicator™ Booms



Contain and eliminate oil spills in and around docks and in bilges.
2' - ORDER #2412
4' - ORDER #2414

Learn more at www.edsonmarine.com/biofresh

EDSON

Edson International
146 Duchaine Blvd.
New Bedford, MA 02745-1292

